

# MONTHLY MEMBERSHIP PROGRESS REPORT

LOCATION INDIA

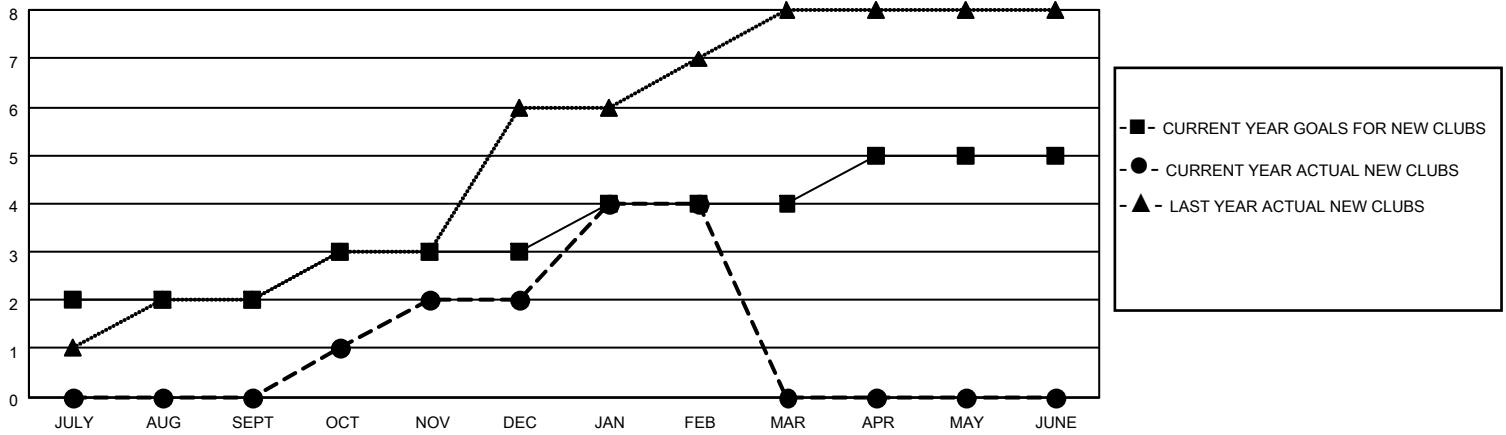
District 321A1

Results as of: 2/28/2022

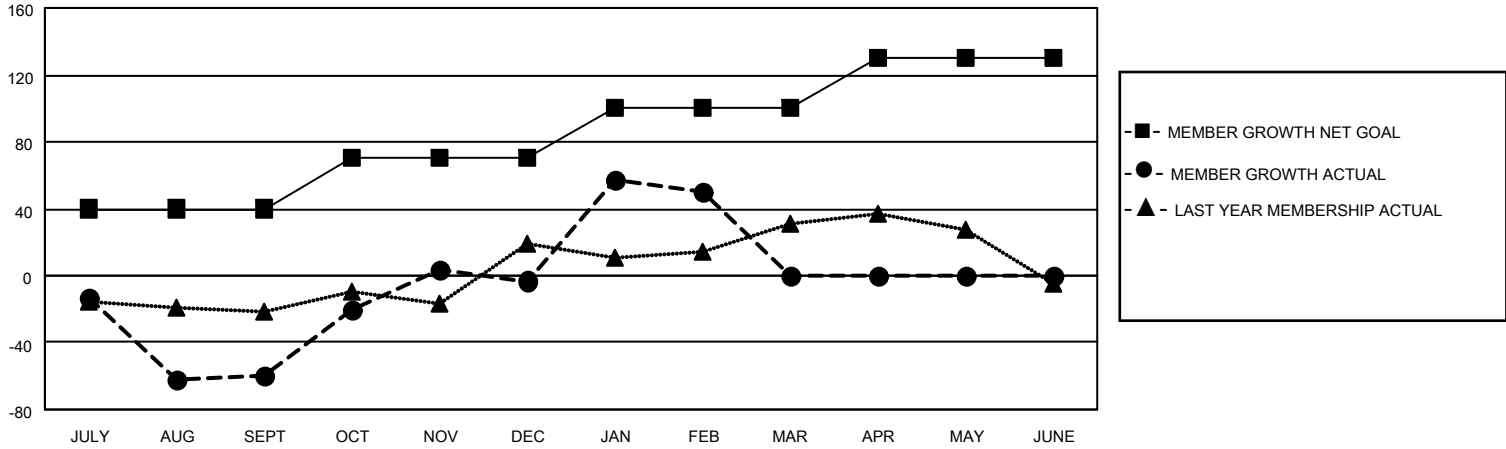
Clubs			
RESULTS FOR 2021-2022			
QUARTER	NEW CLUB GOAL	NEW CLUBS	DROPPED CLUBS
JULY/AUG/SEPT	2	0	5
OCT/NOV/DEC	1	2	1
JAN/FEB/MAR	1	2	0
APR/MAY/JUNE	1	0	0

Members			
RESULTS FOR 2021-2022			
QUARTER	MEMBER GROWTH NET GOAL	MEMBER GROWTH ACTUAL	DROPPED MEMBERS ACTUAL (including transfers)
JULY/AUG/SEPT	40	62	108
OCT/NOV/DEC	30	88	25
JAN/FEB/MAR	30	83	27
APR/MAY/JUNE	30	0	0

**GOALS AND ACTUAL NEW CLUBS CUMULATIVE**



**GOALS AND ACTUAL MEMBERS CUMULATIVE**



**DROPPED CLUBS: 6**

**23 CLUBS OF 61 ADDED 1 OR MORE NEW MEMBERS**

**GENDER DISTRIBUTION**

MALE	1,206 (69.27%)
FEMALE	535 (30.73%)
NON BINARY	0 (0.00%)
PREFER NOT TO ANSWER	0 (0.00%)

**DROPPED MEMBERS**

[CLICK HERE FOR CUMULATIVE MEMBERSHIP DATA](#)

DECEASED	5
CLUB CANCELLED	45
OTHER	115
<b>TOTAL</b>	<b>165</b>

TOTAL FAMILY UNIT MEMBERS	911
FAMILY MEMBERS PAYING HALF DUES	574